



Richmond House

Rehabilitation and Recovery Hospital

Harleston, South Norfolk

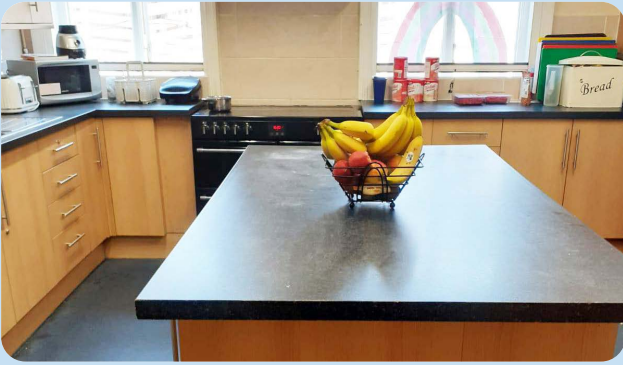
Mission statement:

To work in partnership with individuals to achieve their optimum level of functioning, to maximise their quality of life by building on their existing strengths, facilitating the gaining of new skills and promoting personal development. To enable them to live in the least restrictive environment possible, while maintaining the safety of themselves and others.

Richmond House is an eight-bedded community high dependent, highly specialist hospital for women with a history of offending behaviours that challenges, who have a learning disability, and other conditions including autistic spectrum disorders, personality disorders and mental health conditions.



Communal kitchen



Beautiful fireplace with stained glass window, place to sit and relax



The house has a lovely large secure garden with flower borders and mature trees.

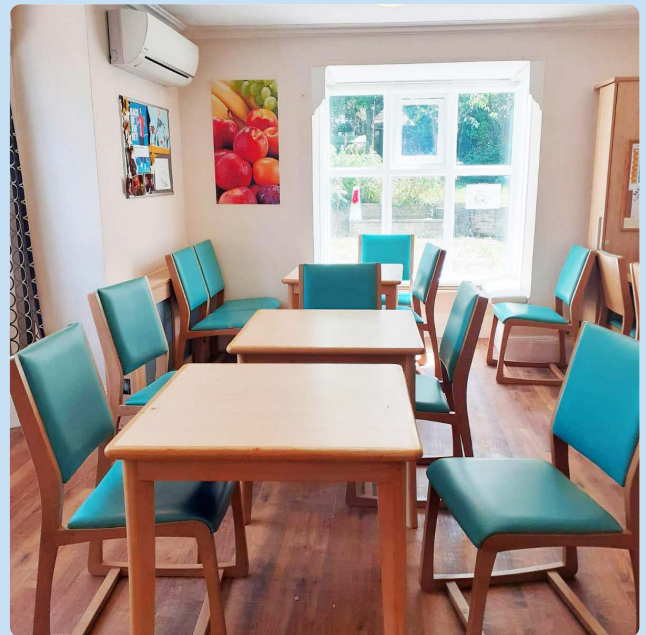
We have a 'nature team' made up of staff and patients who help to care for the plants and garden.

There is an area set aside for growing vegetables.

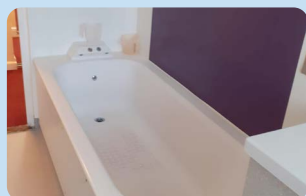
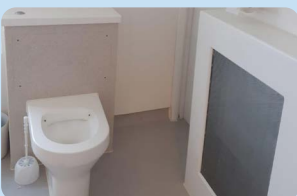
Also within the garden is our Pamper Room where the patients can have treatments, like manicures and pedicures.



We have a lovely large dining room which overlooks the beautiful large garden.



The house has 2 wet rooms and 1 bathroom for the use of our patients



Contact Us

Phone: 01379 852364

Email: richmondadmin@priorygroup.com

Web: www.priorygroup.com

38 Redenhall Road, Harleston,
Norfolk IP20 9HB

PRIORY HEALTHCARE