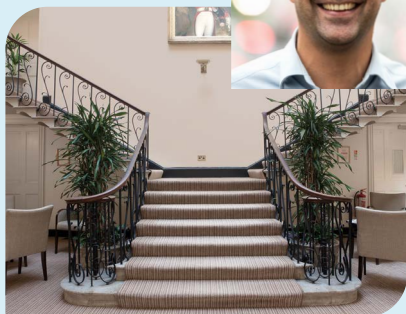


Priory's free  
addiction  
assessment –  
all you need  
to know





**Addictions are treatable, and the most important first step is to seek help. Here at Priory, we understand this can be an extremely daunting and difficult time, so we do all we can to make this as easy and as stress-free as possible.**



## **The benefits of having an initial assessment**

---

If you are choosing to start your journey to recovery with us, you might want to learn how it all works first, and develop an understanding of what will be involved in treatment at Priory. Our free addiction assessment offers a discreet and comfortable space for you to do just that, before deciding whether to commit to our full programme.

The assessment will allow you to speak openly and in confidence, possibly for the first time, about current circumstances and for you to have a discussion about what help you can get. This will all be done with a Priory specialist but without any obligation or financial commitments.

This is a safe space to talk honestly and confidentially, or to begin recognising the impact an addiction can have on loved ones or people close to you.

This time is also an opportunity for our experts to assess your suitability for the full addiction treatment programme which would allow them to begin tailoring your journey, offering bespoke, personalised care.

**The ultimate goal is to prepare you to take that next step towards a healthier and happier life.**

## The assessment – a brief overview

---

- + Initial discussion with an addiction therapist (if you are struggling with a prescription drug addiction, we advise you see a consultant first\*)
- + Explanation of the Confidentiality, and Safeguarding Act we uphold
- + Information on the admission process and what you would bring along for an inpatient stay
- + Discussion over what the therapy programme will look like
- + Tour of the hospital with an idea of what a typical day involves
- + Involvement of family and friends if appropriate or wanted
- + Information on the medically assisted detoxification process
- + Details of costs and payment process
- + Information on the free aftercare Priory provide

**All information shared during this assessment is confidential unless it involves harm to self, others, or discloses issues that would involve the Child Protection Act.**

## What will you need for the assessment?

---

Prior to assessment, patients need to confirm contact details for their GP and acceptance of the need for information to be shared with their GP.

While we would prefer to receive a GP referral when a patient enters our services, this isn't always essential. We are also an approved provider for all of the UK's leading private medical insurers. If you have private medical insurance, a GP referral may be required by your insurer before treatment can commence. Please liaise directly with your insurer to confirm.

Please allow yourself around one to one and a half hours for the whole assessment to take place.

\*Procedures may vary dependent on hospital/ the consultant you see





# The addiction treatment programme (ATP) – a brief overview\*\*

## What happens after the assessment?

During the assessment, our specialist will have taken the time to understand you and your circumstances, in order to recommend the best treatment path for your individual needs.

If an inpatient stay on our 28-day addiction programme is deemed suitable and accepted, you would:

- + Meet with your consultant on admission (or up to 48 hours after admission dependent on presentation)
- + Meet with your nursing team who will show you your room and go through admissions procedures
- + Meet with our admissions manager to discuss payment
- + Be assessed for a medically managed detox
- + Receive a physical assessment by a medical doctor

Admissions can happen immediately if availability of beds allows.

## Contact us

For more information or to make please contact our dedicated team by:

**Telephone: 0800 840 3219**

**Email: [info@priorygroup.com](mailto:info@priorygroup.com)**

**Visit: [www.priorygroup.com](http://www.priorygroup.com)**

Telephone lines are open 24/7. You can also contact any of our hospitals or centres directly using the information found on our website.

Addiction treatment at Priory is underpinned by the renowned 12-Step model, which is an abstinence-based approach first popularised by the organisation Alcoholics Anonymous (AA). The 12-Step model provides a set of guiding principles for ongoing recovery from addiction, and focuses on your motivation to change, whilst also drawing upon elements of spirituality within the treatment and recovery process.

We provide an evidence-based programme that is tailored to individual needs, all structured within NICE guidelines. Our Addiction Treatment Programmes consist of:

- + Medically assisted withdrawal detoxification for drug and alcohol addictions, if this is required
- + Individual 1:1 therapy/key-working session and structured group therapy programmes
- + Family and couples programmes at selected sites
- + Access to both on and off-site 12-Step support groups, recovery meetings or family support meetings, dependent on site offering
- + Free aftercare for 12 months following treatment (aftercare is provided for life following treatment at Priory Hospital Roehampton and Manor Clinic)
- + Free family support for 12 months following treatment

\*\*All information provided can vary dependent on which hospital you are attending. If you have any questions about your specific site, please ask the team directly and they will be happy to assist.

Priory Group UK 1 Limited, 80 Hammersmith Road, London, W14 8UD.  
Company Registration Number: 09057543