

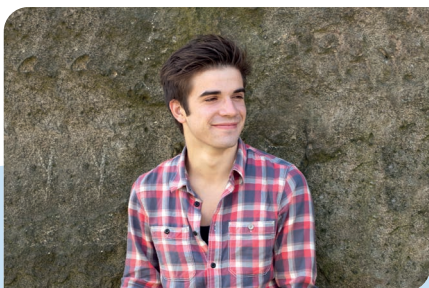


Services for the NHS

Eating Disorder Services

Priory works closely with the NHS to provide intensive treatment for people suffering with severe eating disorders. It is the largest single provider of specialist inpatient care in the UK, providing support for both adults and young people with conditions such as anorexia, bulimia or atypical eating disorders.

Our care and treatment address both the physical consequences of the eating disorder, as well as the related underlying psychological and social factors.



Service overview

- + Strong leadership from consultants experienced in managing complex patients with eating disorders
- + Comprehensive multidisciplinary teams with expertise in treating eating disorders
- + Participation in national clinical quality forums in order to keep services at the forefront of emerging treatment in eating disorders
- + Safe and supportive environments
- + Service line network leading on quality in service delivery and training
- + Provision of evidence-based treatments
- + Access to a wide range of therapeutic interventions
- + Treatment tailored to individual needs
- + Close working relationships with local community teams

Our outcomes

We work hard to involve patients in their care and aim to provide supportive services which make a positive difference to their behaviours and future lives. We are delighted that the vast majority of our patients speak positively about their experience with Priory.

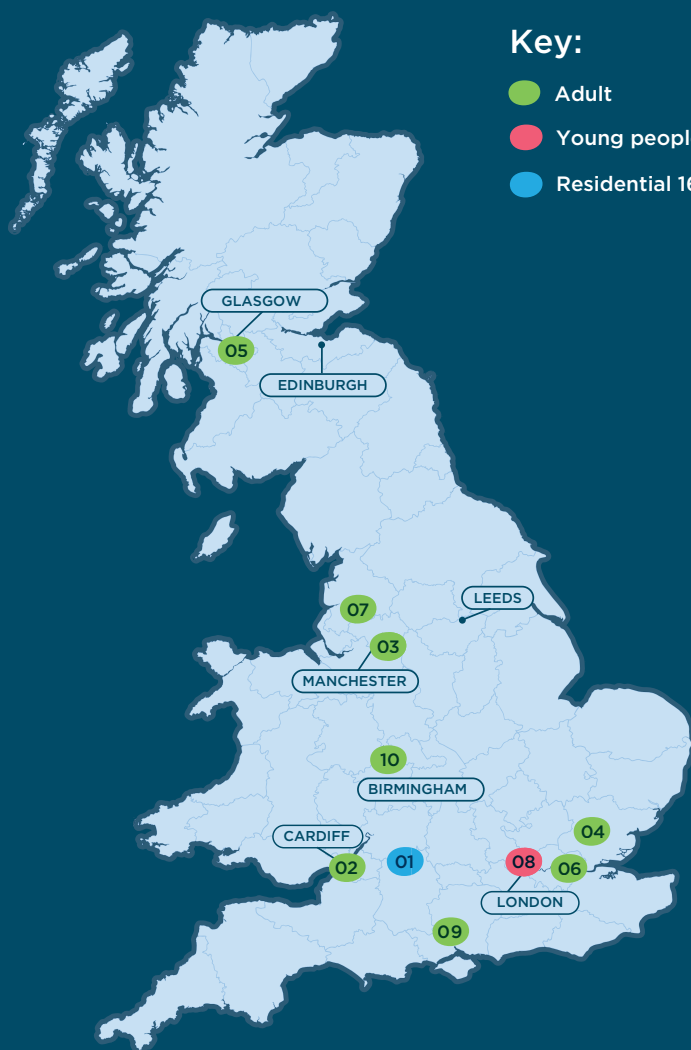
Live your life

Our comprehensive multidisciplinary teams provide evidence-based treatment programmes across a range of conditions. Our treatment plans are tailored to the needs of each individual and aim to take into account mental, physical, educational and spiritual needs.

We are regularly reviewed by the Care Quality Commission (CQC), ensuring that we meet national standards for quality of care.



Our locations



Key:

- Adult
- Young people
- Residential 16+

- 01 Priory Althea Park House/The Anchor
- 02 Priory Hospital Bristol
- 03 Priory Hospital Cheadle Royal
- 04 Priory Hospital Chelmsford
- 05 Priory Hospital Glasgow
- 06 Priory Hospital Hayes Grove
- 07 Priory Hospital Preston
- 08 Priory Hospital Roehampton
- 09 Priory Hospital Southampton
- 10 Priory Hospital Woodbourne

Find out more

For more information or to make a referral, please call **0800 090 1356**, email info@priorygroup.com

For the most up to date information on our services, please visit our website.

