



## Services for the NHS

# Secure Services

**Priory provides comprehensive Secure Services for people with complex mental health needs. We model our service provision on the NHS Secure Service specification for Medium and Low Secure Services, ensuring our patients are given the highest quality of care to enable quick and smooth transitions into local services wherever possible.**

Within Priory's Secure Services, we deliver clinically effective, evidence-based treatment programmes for individuals who require secure care, providing both psychological and physical security.



## Service overview

- + We aim to work collaboratively with patients who present with prolonged disturbance as part of their serious mental illness
- + Patients may be stepped down in security from high secure or medium secure
- + Care and treatment is rehabilitation and recovery focused

Areas of expertise include dealing with:

- + Challenging behaviours
- + Complex needs
- + Severe and enduring mental health
- + Learning disabilities
- + Personality disorders
- + Autistic spectrum disorders (ASDs)

## Our approach

Our patients are at the heart of everything we do. Together, we strive for clinical excellence, innovation and continuous improvement.

Our care pathways are categorised under:

- + Medium Secure Services
- + Low Secure Services

Service users have access to a wide range of activities and facilities to support their recovery, that includes voluntary and paid work opportunities within the hospital setting and in local communities.

All of our treatment plans are tailored to the particular needs of the individual.

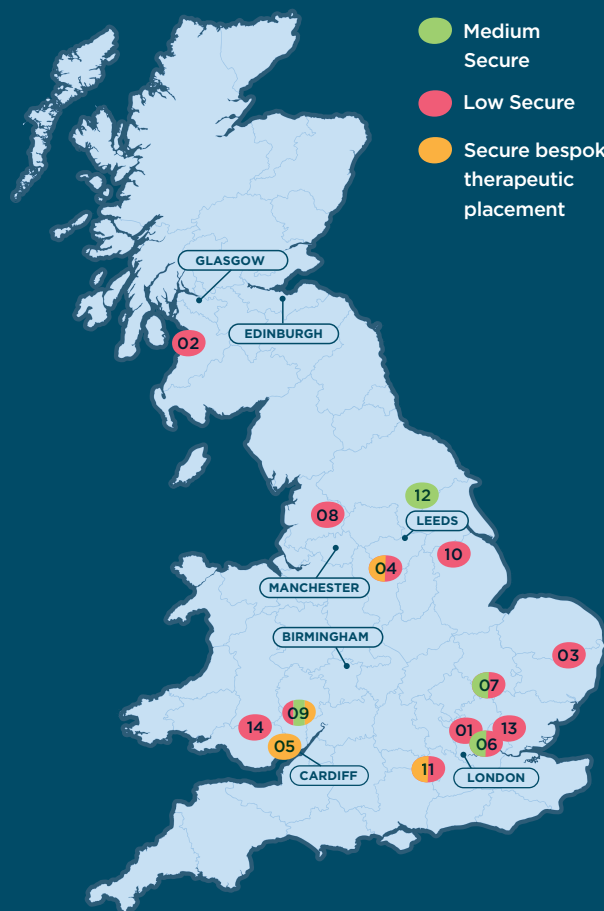
We are regularly reviewed by the Care Quality Commission (CQC), ensuring that we meet national standards for quality of care.



## Our locations

### Key:

- Medium Secure
- Low Secure
- Secure bespoke therapeutic placement



- 01 Priory Avesbury House**  
85 Tanners End Lane,  
Edmonton, London, N18 1PQ  
Tel: 020 8803 7316
- 02 Priory Ayr Clinic**  
Dalmellington Road, Ayr,  
KA6 6PT  
Tel: 01292 886 666
- 03 Priory Burston House**  
Rectory Road, Burston,  
Diss, IP22 5TU  
Tel: 01379 649 900
- 04 Priory Hazelwood House**  
Heath Road, Chesterfield,  
S44 5QS  
Tel: 01246 856 565
- 05 Priory Hospital Cardiff**  
Dyfrig Road, Cardiff, CF5 5AD  
Tel: 02920 556 300
- 06 Priory Hospital Enfield**  
15 Church Street, Edmonton,  
London, N9 9DY  
Tel: 020 8956 1234
- 07 Priory Hospital Kneesworth House**  
Bassingbourn-cum-  
Kneesworth, Royston,  
Hertfordshire, SG8 5JP  
Tel: 01763 255 700
- 08 Priory Kemple View**  
Longsight Road, Langho,  
Blackburn, BB6 8AD  
Tel: 01254 243 000
- 09 Priory Llanarth Court**  
Llanarth Raglan, Abergavenny,  
Monmouthshire, NP15 2YD  
Tel: 01873 840 555
- 10 Priory Lincolnshire**  
Dog Kennel Lane,  
Gainsborough, Lincolnshire,  
DN21 5UD  
Tel: 01427 666 080
- 11 Priory Mildmay Oaks**  
Odiham Road, Winchfield  
Hook, RG27 8BS  
Tel: 01252 845 826
- 12 Priory Stockton Hall**  
The Village, Stockton-on-the-  
Forest, YO32 9UN  
Tel: 01904 400 500
- 13 Priory Suttons Manor**  
London Road, Stapleford,  
Tawney, Romford, RM4 1BF  
Tel: 01708 687 398
- 14 Priory Ty Cwm Rhondda**  
Tyntyla Avenue, Ystrad,  
Rhondda, CF41 7SU  
Tel: 01443 424 940

## Find out more

For more information or to make a referral,  
please call **0800 090 1356**,  
email **prioryenquiries@nhs.net**

For the most up to date information on our services,  
please visit our website – [www.priorygroup.com](http://www.priorygroup.com)

